

Seriously Simple Shawl

Wendy D. Johnson



Seriously Simple Shawl

Yarn

Approximately 600 yards of fingering weight or Shetland wool. The shawl pictured was knit with one 160-gram skein of Kauni Wool 8/2 Effektgarn in the "EH" colorway, with 20 grams left over.

Needles

US size 6 (4mm) circular needle, 24 – 40" long, or size to get gauge. You may want to use a needle a couple of sizes larger to work the bind-off row (see bind-off instructions).

Stitch markers

You will need at least 4 stitch markers to divide the shawl sections, more if you wish to mark each pattern repeat.

Gauge

Gauge worked in stockinette stitch, unblocked, is about 5 stitches to 1 inch. Remember that gauge is not terribly important when knitting lace. If your gauge is dramatically off, however, it will affect the finished size of your shawl as well as the amount of yarn you need.

Size

The unblocked shawl measures 52" across the top and 26" down the center back. Blocked it measures 68" across and 32" down the center back. These measurements are approximate because they depend on how severely you block your piece.

Abbreviations:

K – knit

K2TOG – knit 2 together

P – purl

SL – slip as if to purl

SSK – Slip one stitch as if to purl, then slip the next stitch as if to knit. Insert left needle into the front loops of the slipped stitches and knit them together from this position (through the back loops)

YO – yarnover

Easy Garter Tab Cast-on:

Using a backwards loop cast-on, cast on 3 stitches. Knit 8 rows.

Knit up 1 stitch from each garter stitch ridge on the long edge of the strip you have just knit. There should be 4 ridges. Now pick up and knit 3 stitches along the cast-on edge – a total of 10 stitches.

Set up the pattern:

Work the next 2 rows as follows:

Row 1: k3, place a marker, yo, k1, yo, place a marker, k2, place a marker, yo, k1, yo, place a marker, k3. (14 sts)

Row 2: k3, P to the last 3 stitches, k3

Start working from the charts:

The charts all show the odd-numbered (right-side) rows of one-half of the shawl, excluding the edge and center stitches you have marked off with your stitch markers. You will work each right-side row as follows:

K3, work across the chart from right to left, k center 2 stitches, then work across the chart **again** from right to left,

k3. As you work the chart, you will be increasing 2 stitches on each shawl half – 4 stitches total per right-side row.

All even-numbered (wrong side) rows are worked as follows:

K3, p to the last 3 stitches, k3.

Set-up Chart

Work all 16 rows of the Set-up Chart. At the end of this chart you will have 19 stitches on each side of your shawl between the markers. With the 3 edge stitches on each side and the 2 center stitches, you will have 46 stitches total on your needles.

Now work Chart A.

Chart A

Chart A is worked in the same manner as the Set-up Chart, working the 3 edge stitches, then the chart, then the center

2 stitches, then the chart again, and finishing up with the last 3 edge stitches.

You will work all 48 rows on Chart A two times. That is, after you complete Row 48, you will go back and work the whole chart again.

There are 8 stitches in the center of Chart A that are marked with heavy dotted lines on each side of the group. This is the pattern "repeat." You will work the stitches up to the first dotted line, then work the repeat in that marked group as described below, then work the stitches to the left of the second dotted line.

You may find it helpful to place markers to mark these repeats ("repeat markers").

The **first time** you work Chart A, work the repeat 2 times (so that those 8 stitches represent a total of 16 stitches). After knitting Chart A the first time, you will have a total of 142 stitches on your needles.

The **second time** you work Chart A, work the repeat 8 times (so that those 8 stitches represent a total of 64 stitches). After knitting Chart A the second time, you will have a total of 238 stitches on your needles.

Note: If you would like to knit a larger or smaller shawl, you can do so by knitting Chart A more or fewer times.

Now work Chart B.

Chart B

Chart B has a repeat of 8 stitches in the center marked with heavy dotted lines. You will work the repeat a total of 14 times (so that those 8 stitches represent a total of 112 stitches). As you work Row 1 of Chart B, place markers to mark your repeats if so desired. Work all 6 rows of Chart B.

On Row 6 of Chart B, remove the repeat markers, as the pattern repeats are not in the same position in the next chart. After working Chart B, you will have a total of 250 stitches on your needles.

Chart C

Chart C is worked in the same manner as Chart B, except that in Chart C, you will repeat the 8 stitches within the

heavy dotted lines a total of 14 times (so that those 8 stitches represent a total of 112 stitches).

Work through Row 25 of Chart C. Work Row 26 by knitting across, removing all repeat markers.

Bind off all stitches:

To ensure a loose bound-off edge, you can work the bind-off with a needle one or two sizes larger than the size used to knit the shawl.

K2, then slip the 2 stitches just worked back to the lefthand needle and k those 2 stitches together. K the next stitch, then slip the 2 stitches on the righthand needle back to the lefthand needle and k those 2 stitches together through the back loops.

Continue in this manner until all stitches are bound off.

Finishing

Weave in all ends, but do not trim them until after you have blocked the shawl. Soak your shawl in warm water for approximately 15 minutes. You can use woolwash in your water, and then rinse with warm water.

Remove the shawl and squeeze it gently to remove excess water.

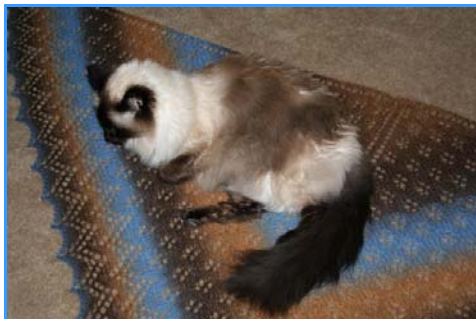
Lay the damp shawl out flat, stretching it as you do (you can stretch it out as much as you like when blocking, but make sure you stretch enough to open up the pattern) and pinning it into place.

Shape it so that the top edge is straight, and the bottom edging is evenly pinned out according to the photos. Let the shawl dry completely before unpinning it.

This pattern is copyright protected

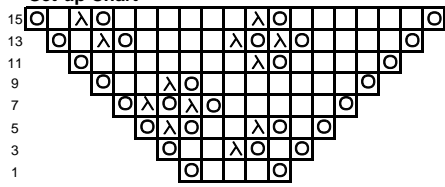
© Wendy D. Johnson 6/10
All rights reserved.
<http://wendyknits.net>

This pattern is for your personal, non-commercial use only. You are not allowed to make garments from this pattern for sale anywhere. You are not allowed to mass produce this pattern or garments made from it.



Lace Charts

Set-up Chart



Key	
[]	K
[O]	YO
[/]	K2tog
[\]	SSK
[/ \]	SI 1 k2tog pss0

Chart A

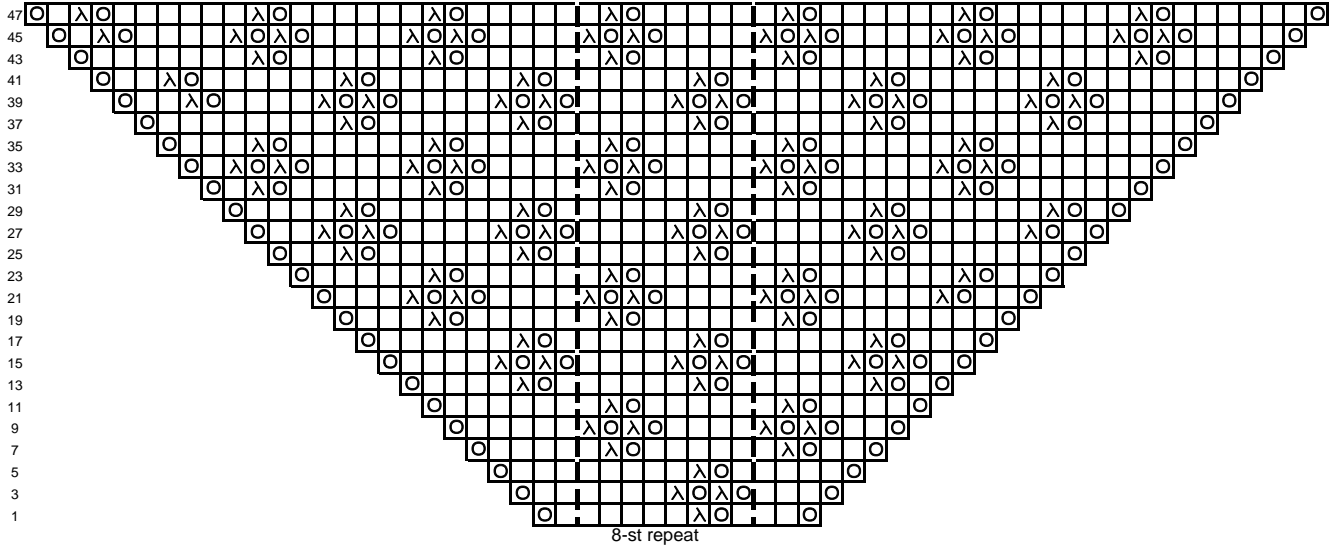


Chart B

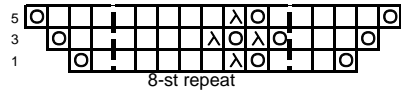


Chart C

